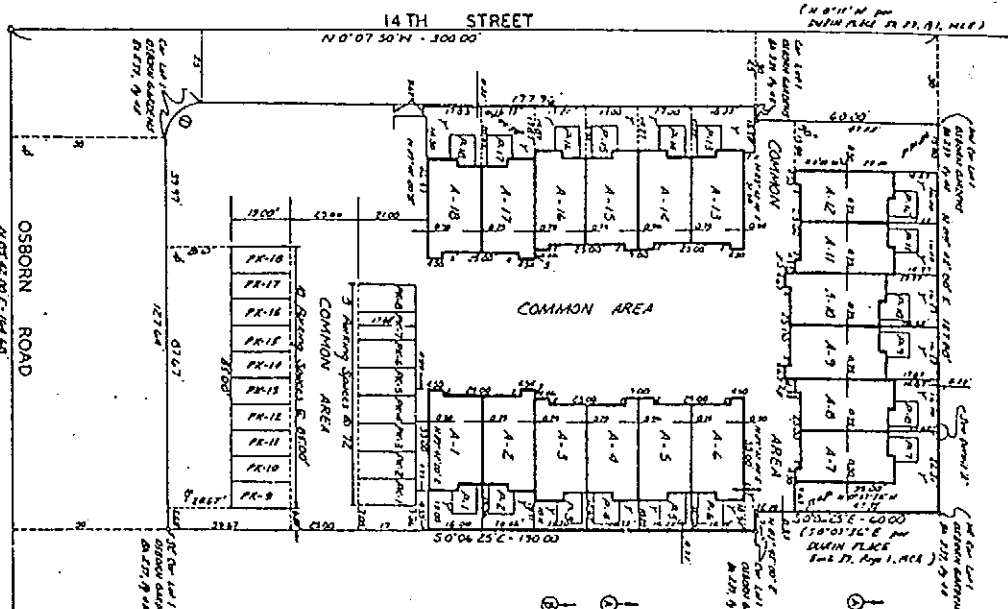


Master

242-16 OSBORN GARDENS CONDOMINIUM

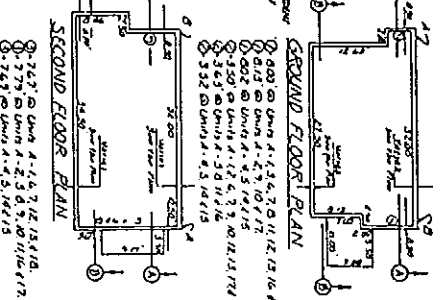
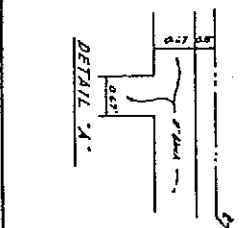
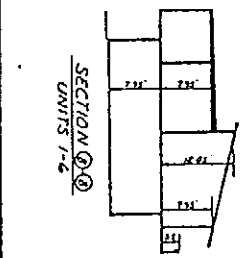
5-25-82
 HORIZONTAL PROPERTY REGIME PLAT
 LOT 1 OF OSBORN GARDENS, BK 239, PG 48,
 MARICOPA COUNTY, ARIZONA

APPROVED FOR RECORD
 COUNTY OF MARICOPA, ARIZONA
 REC'D 5-25-82
 10:00 AM
 COUNTY CLERK
 J. P. [Signature]



UNIT NO.	SQ. FT.
A-1	1,013.00
A-2	1,013.00
A-3	1,013.00
A-4	1,013.00
A-5	1,013.00
A-6	1,013.00
A-7	1,013.00
A-8	1,013.00
A-9	1,013.00
A-10	1,013.00
A-11	1,013.00
A-12	1,013.00
A-13	1,013.00
A-14	1,013.00
A-15	1,013.00
A-16	1,013.00
A-17	1,013.00
A-18	1,013.00

1. Copy from of the State of Arizona
 Department of Public Safety
 Division of Motor Vehicles
 License Plate No. 1-11111
 2. Building Authority has reviewed and approved the
 drawings of this building
 and is hereby certifying that the same
 conform to the provisions of the Building
 Code of the State of Arizona



LEGEND
 1-6 Units 1-6
 7-18 Units 7-18
 1-18 Units 1-18

REMARKS:
 THIS PLAN IS A PART OF THE RECORDATION OF THE INSTRUMENTATION OF LOT 1 OF OSBORN GARDENS, BK 239, PG 48, MARICOPA COUNTY, ARIZONA.

LEGAL DESCRIPTION:
 LOT 1 OF OSBORN GARDENS, BK 239, PG 48, MARICOPA COUNTY, ARIZONA.

GENERAL NOTES:
 1. The building shall be constructed in accordance with the Arizona Building Code, 1976 Edition, as amended.
 2. The building shall be constructed in accordance with the Arizona Electrical Code, 1976 Edition, as amended.
 3. The building shall be constructed in accordance with the Arizona Mechanical Code, 1976 Edition, as amended.
 4. The building shall be constructed in accordance with the Arizona Fire Code, 1976 Edition, as amended.
 5. The building shall be constructed in accordance with the Arizona Health Code, 1976 Edition, as amended.
 6. The building shall be constructed in accordance with the Arizona Safety Code, 1976 Edition, as amended.
 7. The building shall be constructed in accordance with the Arizona Environmental Code, 1976 Edition, as amended.
 8. The building shall be constructed in accordance with the Arizona Cultural Code, 1976 Edition, as amended.
 9. The building shall be constructed in accordance with the Arizona Historical Code, 1976 Edition, as amended.
 10. The building shall be constructed in accordance with the Arizona Archaeological Code, 1976 Edition, as amended.
 11. The building shall be constructed in accordance with the Arizona Paleontological Code, 1976 Edition, as amended.
 12. The building shall be constructed in accordance with the Arizona Anthropological Code, 1976 Edition, as amended.
 13. The building shall be constructed in accordance with the Arizona Ethnological Code, 1976 Edition, as amended.
 14. The building shall be constructed in accordance with the Arizona Linguistic Code, 1976 Edition, as amended.
 15. The building shall be constructed in accordance with the Arizona Historical Linguistic Code, 1976 Edition, as amended.
 16. The building shall be constructed in accordance with the Arizona Archaeological Linguistic Code, 1976 Edition, as amended.
 17. The building shall be constructed in accordance with the Arizona Paleontological Linguistic Code, 1976 Edition, as amended.
 18. The building shall be constructed in accordance with the Arizona Anthropological Linguistic Code, 1976 Edition, as amended.
 19. The building shall be constructed in accordance with the Arizona Ethnological Linguistic Code, 1976 Edition, as amended.
 20. The building shall be constructed in accordance with the Arizona Linguistic Code, 1976 Edition, as amended.

SAUER LAHUM & ASSOCIATES, INC.
 ARCHITECTS
 1400 N. CENTRAL AVENUE
 PHOENIX, ARIZONA 85004
 1-4-80 A.K. C.L.L. 00-119 1/111

